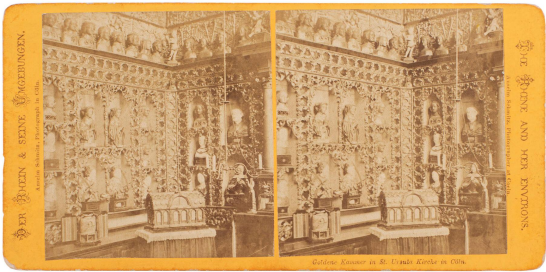


# Basic Detail Report

---



**Title**

DER RHEIN & SEINE UMGEBUNGEN. | Anselm Schmitz,  
Photograph in Cöln. | THE RHINE AND ENVIRONS. | Anselm  
Schmitz, Photographer at Coeln.

**Date**

about 1860-1900

**Dimensions**

H: 3 3/8 in. (86 mm); W: 6 15/16 in. (176 mm)

**Medium**

Stereograph.

**Classifications**

Photographs

**Credit Line**

Gifts of Carol Crampton Laesecke in memory of her grandfather, Henry C. Truesdall

**Object number**

2005.147

**Collections**

Works on Paper

**Not On View**