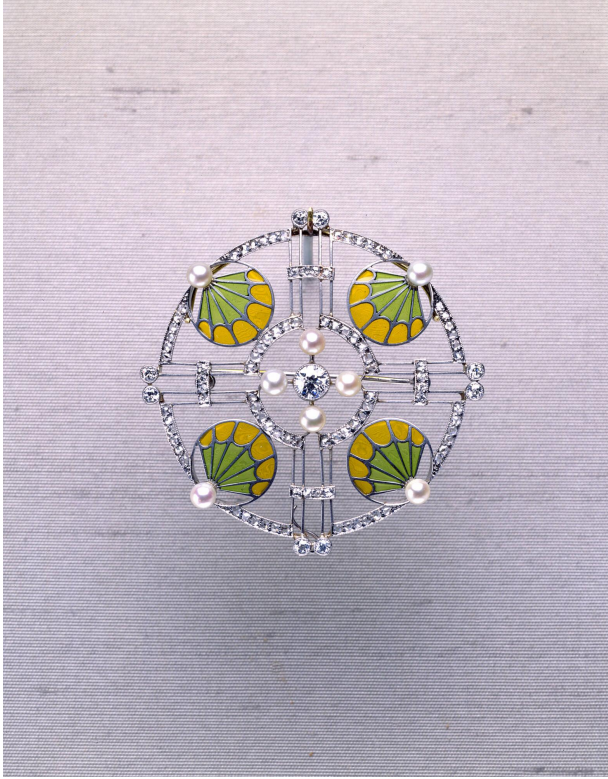


Basic Detail Report

**Title**

Brooch

Date

about 1905

Dimensions

L: 2 in. (5.1 cm); W: 2 in. (5.1 cm); Depth: 1/2 in. (1.3 cm)

Medium

Platinum, pearls, plique-a-jour enamel, and diamonds

Classifications

Jewelry

Credit Line

Gift of Janet and Ricardo Zapata in Memory of Helen Stillman

Object number

1999.30

Collections

Decorative Arts

Label Text

Plique-à-jour (French for “open to light”) is a form of enameling in which the powdered glass substance is suspended within a filigree framework rather than on a metal backing so that light can shine through the translucent colored material in a manner similar to stained glass. The design of this brooch displays a range of influences. The fan shapes of the enamel sections reflect Japanese forms, while the play of the straight platinum lines against the pearl and enamel circles suggests the abstraction seen in German modern art from the period

On View

Toledo Museum of Art (2445 Monroe Street), Gallery, 34, Jewelry Gallery