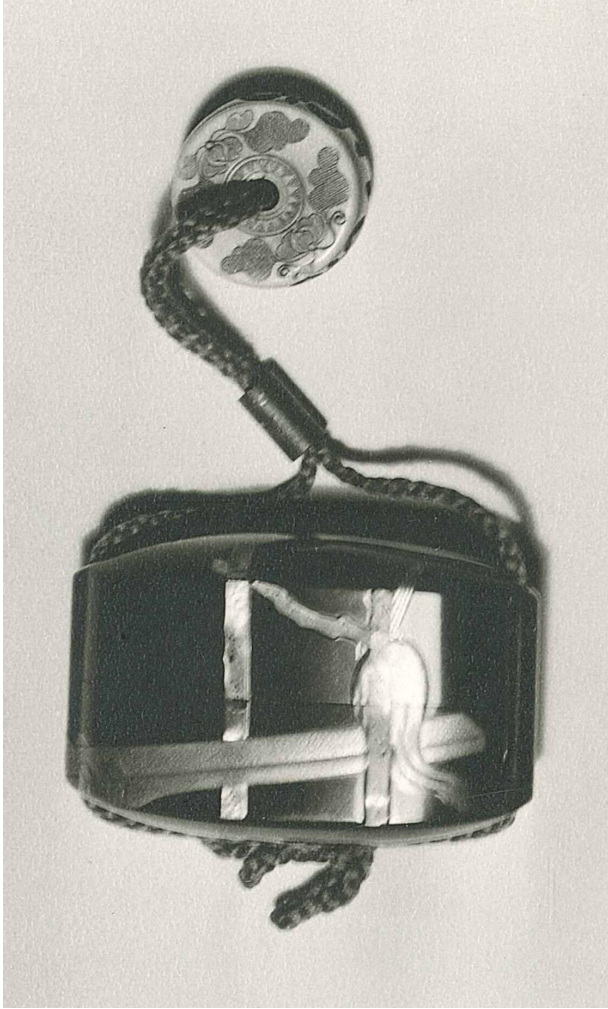


Basic Detail Report

**Title**

Inro: whisk leaning against a bamboo structure

Artist

Kajikawa

Date

19th century

Dimensions

H: 2 1/4 (5.7 cm) diam: 3 1/2 in. (8.9 cm)

Medium

lacquer

Classifications

Sculpture

Credit Line

Gift of H. A. Fee

Object number

1948.117C

Collections

Sculpture

Not On View