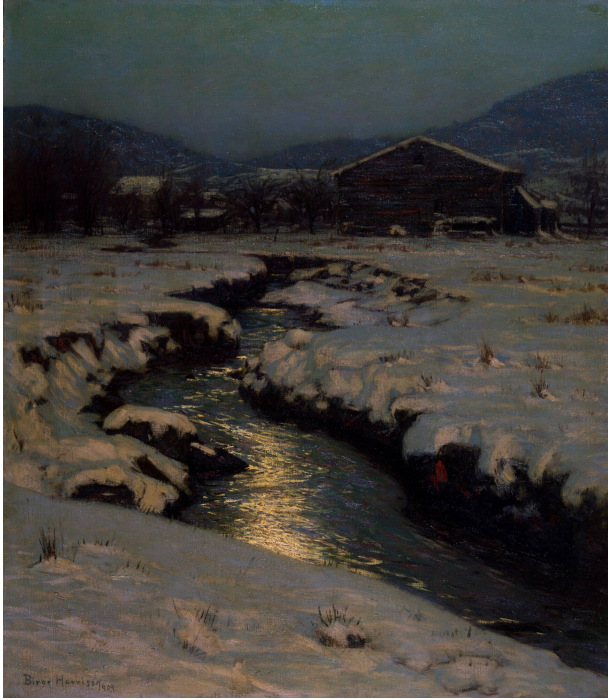


# Basic Detail Report

---

**Title**

Woodstock Meadows in Winter

**Artist**

Birge Harrison

**Date**

1909

**Dimensions**

Frame: 62 5/8 × 56 3/4 × 2 1/4 in. (159.1 × 144.1 × 5.7 cm) Canvas: 46 1/8 × 40 1/4 in. (117.2 × 102.2 cm)

**Medium**

oil on canvas

**Classifications**

Paintings

**Credit Line**

Gift of Cora Baird Lacey, in memory of Mary A. Dustin

**Object number**

1912.1266

**Published References**

Harrison, B., *Landscape Painting*, New York, 1909, repr. opp. p. 216.

Hoeber, A., "Birge Harrison, N.A., Landscape Painter," *International Studio*, LXIV, July 1911, repr. p. VII.

*Toledo Museum of Art Museum News*, no. 20, Dec. 1912, repr.

Bryant, L., *American Pictures and their Painters*, New York, John Lane, 1917, p. 197, repr.

Bryant, L., *What Pictures to See in America*, New York, 1925, p. 225, repr.

Jackman, Rilla E., *American Arts*, Chicago, 1940, repr.

Toledo Museum of Art, *The Toledo Museum of Art, American Paintings*, Toledo, 1979, p. 57, pl. 129.

Coke, Van Deren, *Andrew Dasburg*, Albuquerque, 1979, repr. fig. 4, p. 11.

Baker, John, *Henry Lee McFee and Formalist Realism in American Still Life, 1923-1936*, Lewisburg, 1987, p. 21, fig. 3.

Love, Richard H., *Carl W. Peters: American Scene Painter from Rochester to Rockport*, Rochester, NY, 1999, p. 195, fig. 18-10, p. 196.

Smith, Anita M., *Woodstock: History and Hearsay*, 2nd ed., Woodstock, NY, Woodstock Arts, 2006, repr. p. 94.

Peterson, Brian H., *Form Radiating Life: The Paintings of Charles Rosen*, Doylestown, PA, James A. Michener Art Museum, 2006, p. 35, fig. 3 (col.).

Grandbois, Michèle, ed., *Marc-Aurèle Fortin: The Experience of Color*, Montreal, Les Éditions de l'Homme, 2011, fig. 30 (col.) pp. 68, 259 (not in exhibition).

### **Exhibition History**

Toledo, The Toledo Museum of Art, March 1912, no. 211.

Buffalo, Buffalo Fine Arts Academy and Albright Art Gallery, *Two Retrospective Exhibitions of Paintings by Alexander Harrison and Birge Harrison*, 1913, no. 1, repr.

Toledo, The Toledo Museum of Art, *Fiftieth Anniversary Exhibition of Contemporary American Oil Paintings Acquired by the Toledo Museum, 1901-1951*.

New York, The American Academy of Arts and Letters, *An Exhibition of Paintings and Sculpture Commemorating the Armory Show of 1913*, 1955, no. 39.

Poughkeepsie, (NY), Vassar College Art Gallery, *Woodstock: An American Art Colony 1902-1977*, 1977, no. 12, repr.

Milwaukee, Milwaukee Art Museum; Ithaca, NY, Cornell University, Herbert F. Johnson Museum of Art; New York, Albany Institute of History and Art; New York Historical Society; Winterthur, DE, Winterthur, Museum, Garden & Library, *Byrdcliffe: An American Arts and Crafts Colony*, June 25, 2004 - August 2005, no. 62, p. 101, repr. (col.) p. 181.

### **Collections**

Paintings

#### **Label Text**

Birge Harrison was an influential teacher and a leading figure in the development of Woodstock, New York as an art colony. In 1904 he founded the Woodstock School of Landscape Painting of the Art Student League, which he directed until 1910. This snowy scene shows the stream that joins Tannery Brook at

Woodstock Meadows. In the center background is Wide Clove, with Mead's Mountain to the left and Overlook Mountain to the right.

**Not On View**